

Boquillas y pasamuros piscina hormigón

Pool inlets and wall conduits for concrete pools

Boquillas de aspiración

Suction inlets



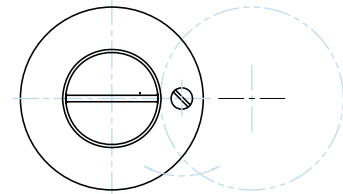
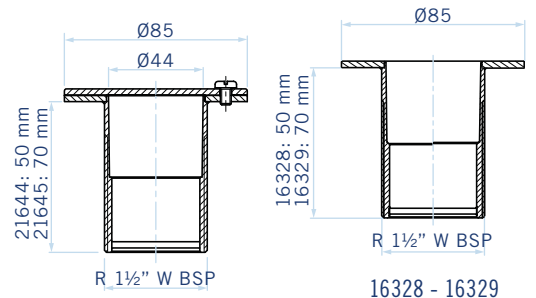
16328 / 16329

Rosca exterior 1 1/2". Se precisa raccord de conexión código 05684
 Longitud 50 mm. Código: 16328
 Longitud 70 mm. Código: 16329
 Longitud 50 mm con tapa. Código: 21644
 Longitud 70 mm con tapa. Código: 21645



21644 / 21645

External 1 1/2" thread. Requires push fit connection code 05684
 Length 50 mm. Code no. 16328
 Length 70 mm. Code no. 16329
 Length 50 mm with cover. Code no. 21644
 Length 70 mm with cover. Code no. 21645



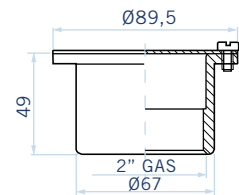
21644 - 21645



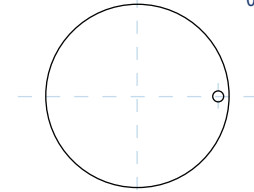
00315

Cuerpo en latón cromado y tapeta en acero inox AISI-316. Rosca interior 2". Conexión a presión. (Se precisa manguito 01392 acople a manguera). Código: 00315

Body in chrome-plated brass with (AISI-316) stainless steel cover. Internal 2" thread. Push fit connection. Requires inlet hose connector code 01392 for connection to hose). Code no. 00315



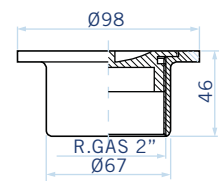
00315



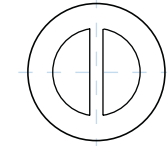
00317

Fabricada en latón cromado. Conexión por rosca interior 2". (Se precisa manguito 01395 para acople a manguera). Código: 00317

Body in chrome-plated brass. 2" internal thread. Push fit connection. Requires inlet hose connector code 01395 for connection to hose). Code no. 00317



00317



Pasamuros

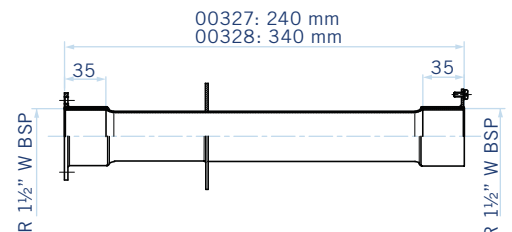
Wall conduits



Fabricados en acero inoxidable 18/8 AISI-304. Ambos extremos con rosca interior 1 1/2". Provistos con toma equipotencial.

Longitud 240 mm. Código 00327
 Longitud 340 mm. Código 00328

Manufactured from 18/8 AISI-304 Stainless Steel. Both ends have 1 1/2" internal thread connections. Complete with earth connection.
 Length 240 mm. Code no. 00327
 Length 340 mm. Code no. 00328



00327 - 00328