

Boquillas de impulsión Return inlets



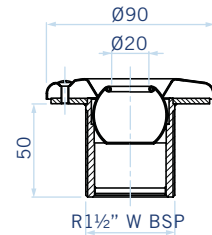
16325

Rosca exterior 1 ½". Caudal máximo recomendado:
4,5 m³/h. Bola Ø 20 mm.
Longitud 50 mm. Código: 16325
Longitud 70 mm. Código: 16326

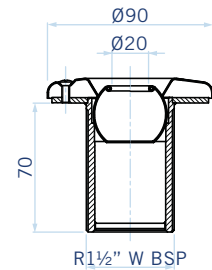


16326

External 1 ½" thread. Maximum recommended flow
rate: 4.5 m³/h. Ø 20 mm ball.
Length 50 mm. Code no: 16325
Length 70 mm. Code no: 16326



16325



16326



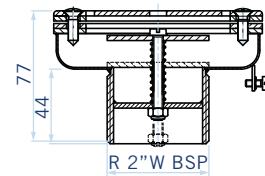
15839

Regulable de fondo

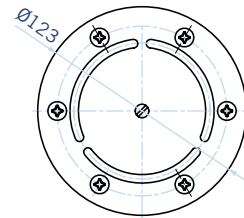
Rosca exterior 2". Caudal máximo recomendado:
14 m³/h. El caudal de agua puede ser regulado
mediante el tornillo central.
Código: 15839

Adjustable floor inlet

External 2" thread. Maximum recommended flow rate:
14 m³/h. Water flow rate can be adjusted by turning
the central screw.
Code no. 15839



15839

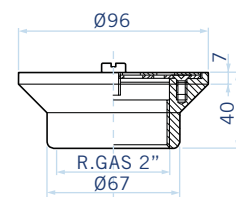


Regulable

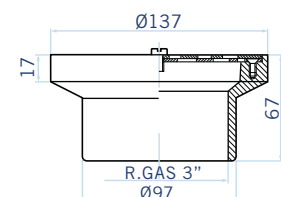
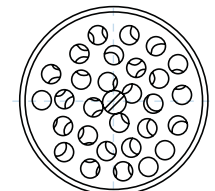
En el caso de esta boquilla, el cuerpo está fabricado
en latón cromado y la rejilla es de acero inox AISI-316.
Código 00312. Caudal max. 14m³/h. Rosca int. 2"
Código 00313. Caudal max. 39m³/h. Rosca int. 3"

Adjustable inlet

With chrome-plated brass body and grille in AISI-316
Stainless Steel.
Code no. 00312. Maximum flow rate: 14m³/h. Internal
2" thread.
Code no. 00313. Maximum flow rate: 39m³/h. Internal
3" thread.



00312



00313

