

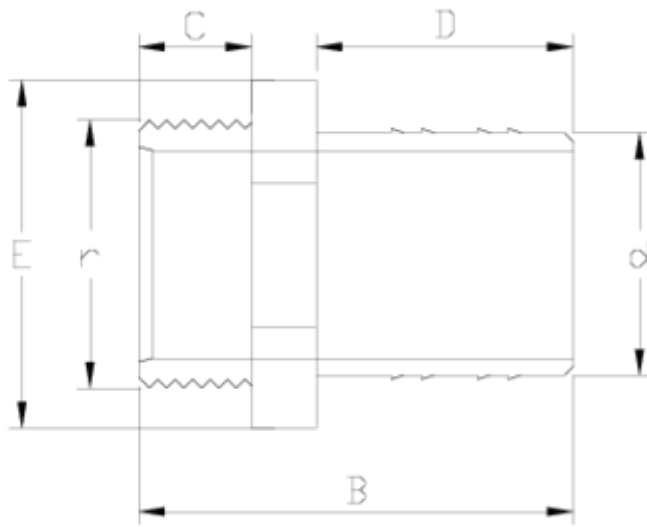


Accesorios de presión encolar & mixtos PVC-U

Espiga R/M ITEM 906

| Ref. | Descripción | P.Neto | Vol. (m ³) | P.Bruto | Lote |
|---------|----------------------|--------|------------------------|---------|------|
| 1002961 | ESPIGA R/M 3/4"-20 | 0,020 | 0,00891 | 2,14 | 100 |
| 1002962 | ESPIGA R/M 1"-32 | 0,036 | 0,01553 | 2,85 | 70 |
| 1002964 | ESPIGA R/M 1 1/2"-50 | 0,085 | 0,02243 | 3,90 | 40 |
| 1002965 | ESPIGA R/M 2"-63 | 0,113 | 0,01553 | 2,03 | 15 |



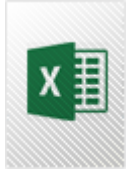


ITEM 906 | Espiga R/M

| Código | r x d | Peso (g) | B | C | D | E | PN | ROSCA |
|--------|-----------|----------|-----|----|----|----|------|-------|
| 02961 | 3/4"-20 | 17 | 62 | 17 | 36 | 27 | PN10 | BSP |
| 02962 | 1"-32 | 55 | 78 | 21 | 36 | 47 | PN10 | BSP |
| 02964 | 1 1/2"-50 | 83 | 89 | 22 | 50 | 57 | PN10 | BSP |
| 02965 | 2"-60 | 110 | 100 | 26 | 65 | 60 | PN10 | BSP |



DOCUMENTACIÓN DE PRODUCTO



CERTIFICADOS DE PRODUCTO



CERTIFICADOS DE EMPRESA

